

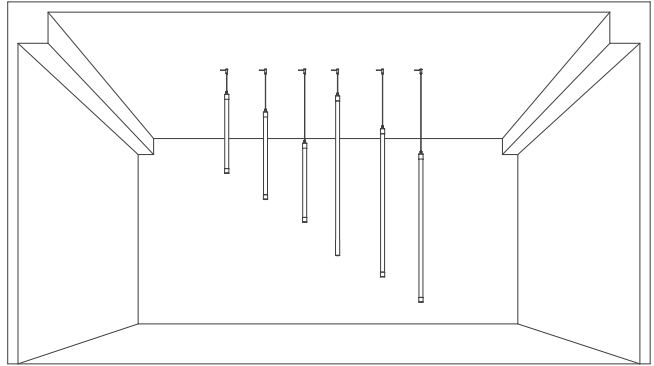
# Installation Manual

## NNR25 Vertical suspension accessories

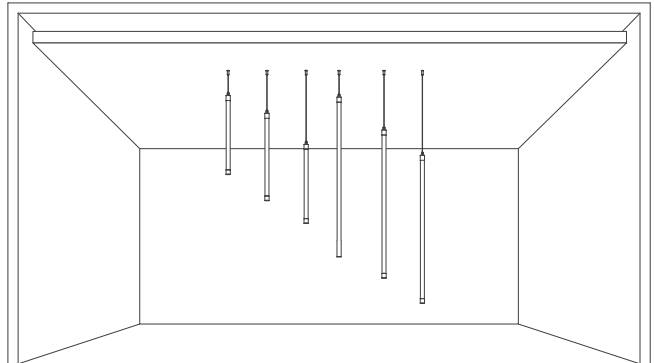
### V1.1



Side/ Cement Ceiling



Top/ Suspended Ceiling



Please read this manual carefully before installation, and install the product in the correct way.  
Please keep it after reading, so that all users of this product can check it at any time.

## Prepare materials



Neon strip



Manual



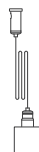
PC tube



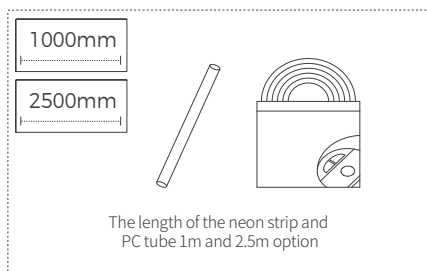
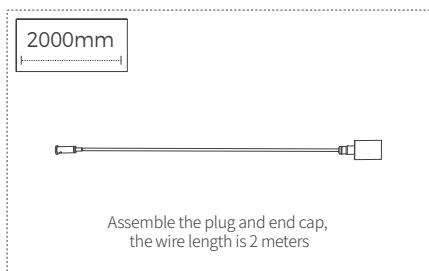
Rubber plug screw



Countersunk screw



Two-in-one wire



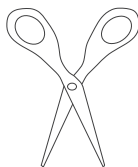
## Installation tools



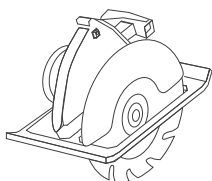
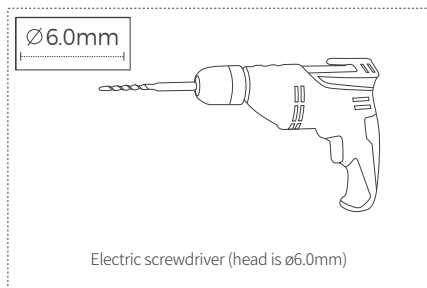
Phillips screwdriver



Slotted screwdriver



Scissors



Cutting Machine

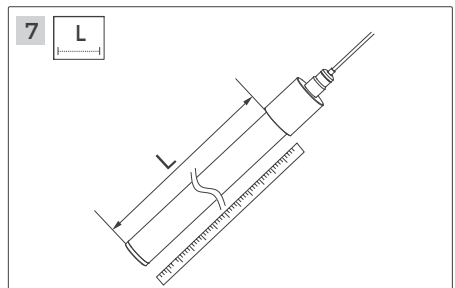
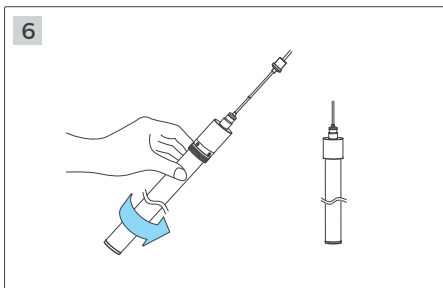
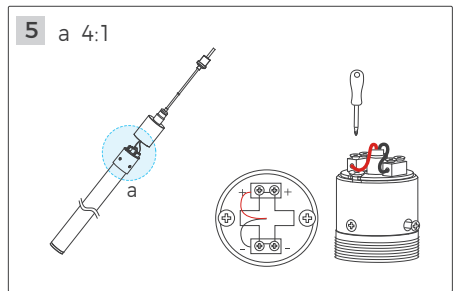
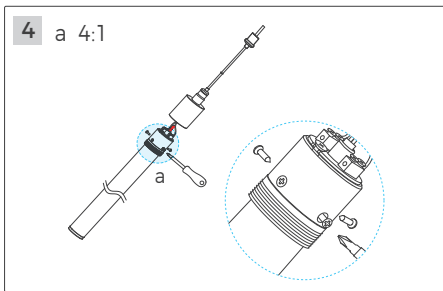
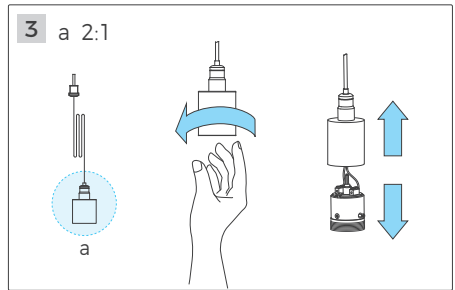
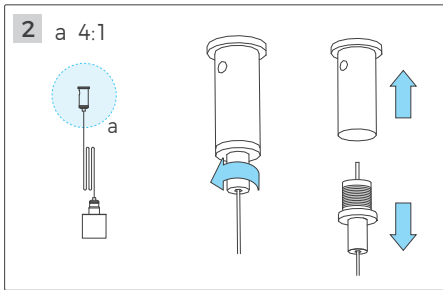
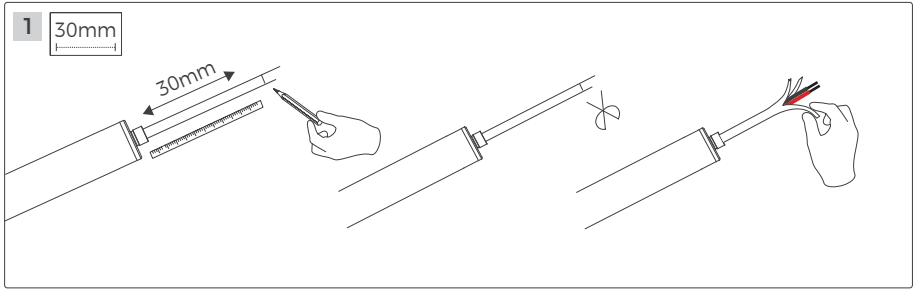


Pen



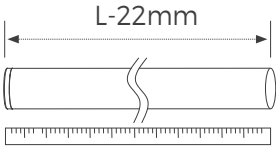
Tape measure

# Installation Steps



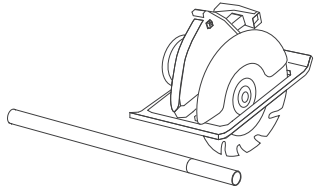
# Installation Steps

**8** L-22mm The PC tube is 22mm shorter than the light strip



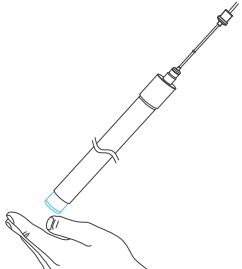
A diagram showing a cylindrical PC tube above a ruler. A double-headed arrow above the tube indicates a length of L-22mm, representing the gap between the tube and the light strip below it.

**9** L-22mm



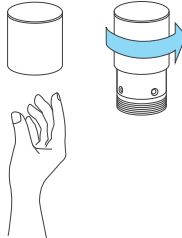
An illustration of a circular saw cutting through a PC tube. A dimension line above the tube indicates a length of L-22mm.

**10**



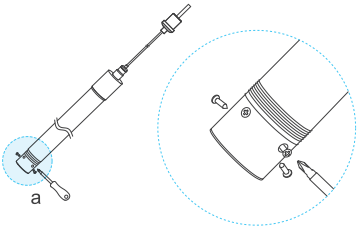
A hand is shown applying a blue adhesive from a syringe onto the end of the PC tube.

**11**



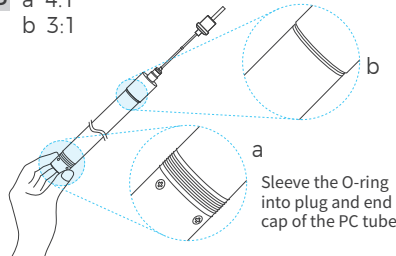
A hand is shown inserting a cylindrical cap into the end of the PC tube. A blue arrow indicates the direction of insertion.

**12** a 4:1



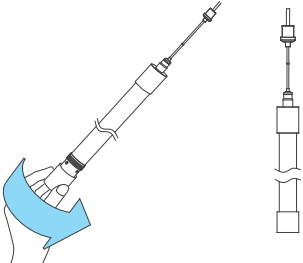
A hand is shown applying adhesive from a syringe to the cap. A circular inset labeled 'a' provides a magnified view of the cap's end, showing a textured surface and a small hole.

**13** a 4:1  
b 3:1



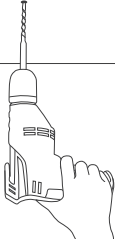
A hand is shown applying adhesive from a syringe to the cap. Two circular insets, labeled 'a' and 'b', provide magnified views of the cap's end. Inset 'a' shows the O-ring being inserted into the cap. Inset 'b' shows the O-ring fully seated. A text label reads: "Sleeve the O-ring into plug and end cap of the PC tube".

**14**



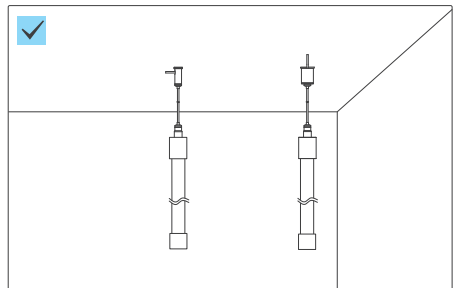
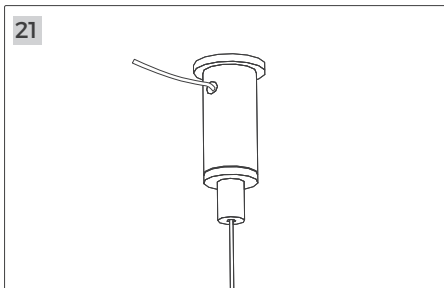
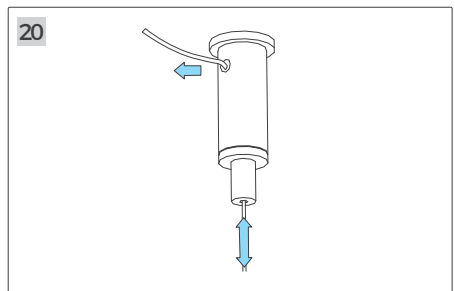
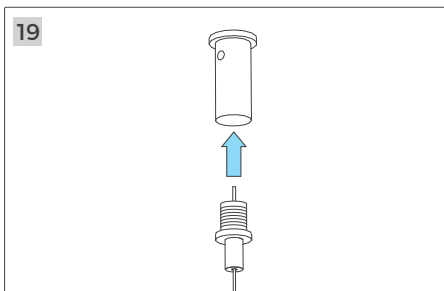
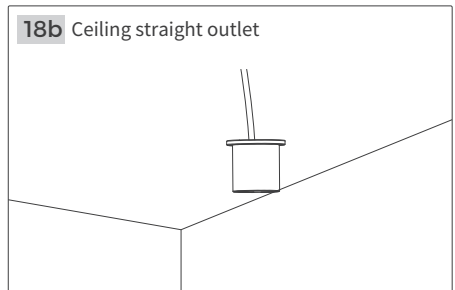
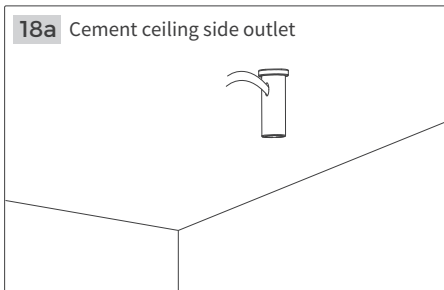
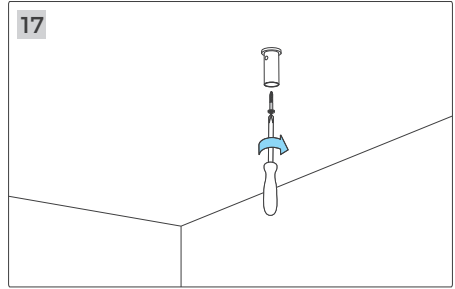
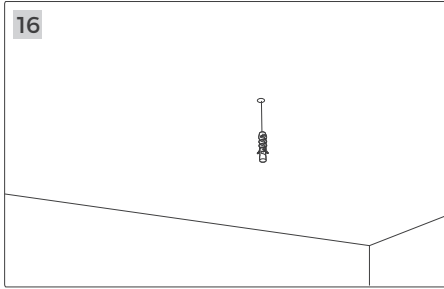
A hand is shown attaching the cap to the PC tube. A blue arrow indicates the direction of assembly. To the right, a vertical diagram shows the cap and PC tube joined together.

**15**



A hand is shown using a power drill to create a hole in a wall.

# Installation Steps





## Parameters

Code	Wire length	Load bearing	Outlet	Adaptation model
AS-NNR25VHS-1000	2M	4kg	Side	NNR25-XXCSN050CC0100
AS-NNR25VHS-2500	2M	4kg	Side	NNR25-XXCSN050CC0250
AS-NNR25VHD-1000	2M	4kg	Top	NNR25-XXCSN050CC0100
AS-NNR25VHD-2500	2M	4kg	Top	NNR25-XXCSN050CC0250



**Tel:** +86-755-2923-1888  
**E-mail:** colors@colorsled.com  
**Web:** www.colorsled.com  
**Add:** Building A5, Qixing Wisdom Park, Shiyan Youth Road,  
Bao'an District, Shenzhen, China

